

MODEL NO.

TVL-M20GNMM

PRODUCT LINE

Valvetop Discrete Valve Controller

SPECIFICATIONS

Model Valvetop Model TVL, epoxy-coated A360 Aluminum enclosure, dichromate coated

Bus Sensor (2) Mech SPDT (10A@250VAC)

Area Classification Intrinsically Safe; Ex ia IIC T4, Ex tb IIC T135C IP67, NEMA 4, 4X; CL I GPS A-D, CL 2 GPS E-F

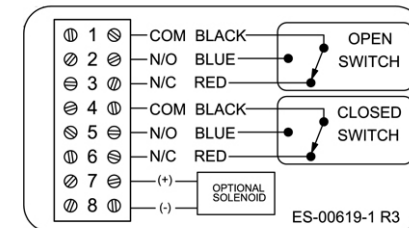
Visual Display 90° Green Open / Red Closed

Shaft NAMUR, 304 Stainless Steel

Conduit Entries (2) M20

O-Rings Silicone

Temperature Rating -40 °C to 80 °C



Current as of Jul 31, 2013 - subject to change without notice.

TOPWORX

TopWorx, Inc. (502) 969-8000 ph.
 3300 Fern Valley Rd. (502) 969-5911 fax
 Louisville, KY 40213 www.topworx.com