

YGROS YE V

THE SIMPLEST MAGNETIC CHECK VALVE

FOR FOOD AND BEVERAGE PLANTS



YGROS[®]
VALVES
Let it flow

“YGROS patented technology sets new standards in the world of plant design, thanks to a patented magnetic principle replacing the conventional spring in Non Return Valves”

Suitable for horizontal, vertical up and down installation

For food and beverage plants. Up to 150°C

Finally the Simplest Model of YGROS Magnetic Check Valves



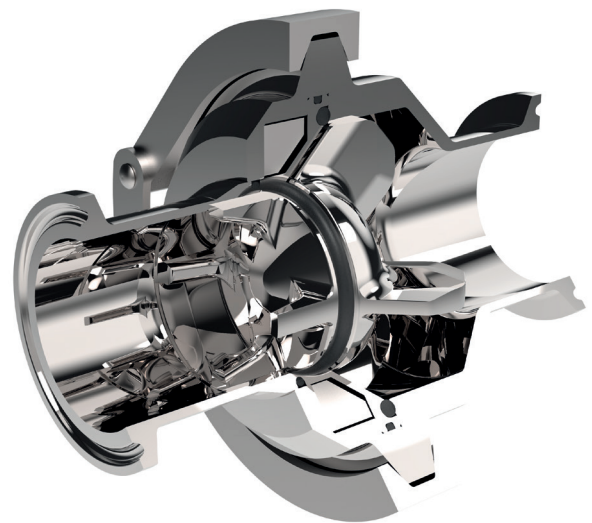
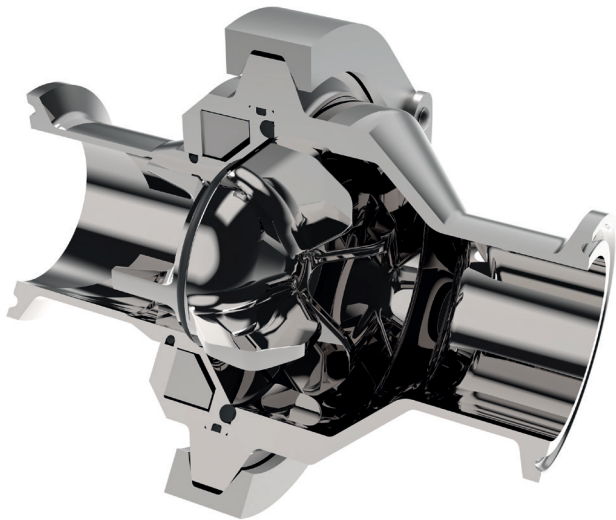
BENEFITS:

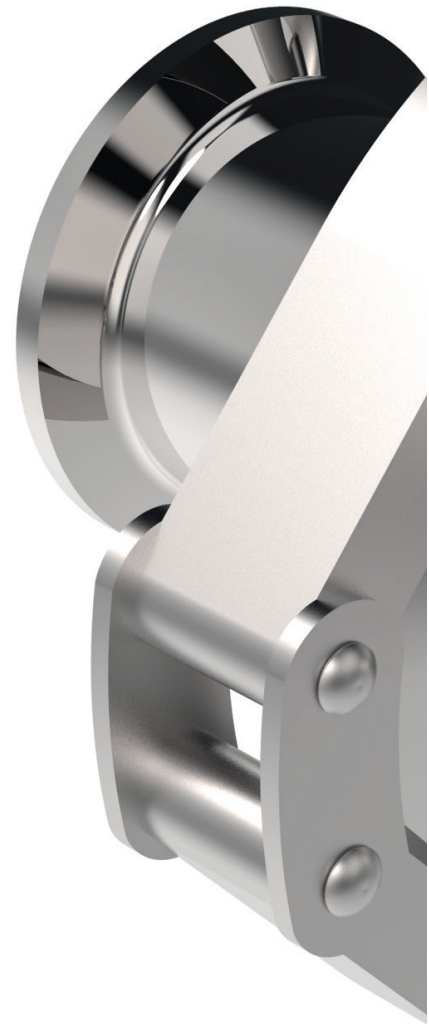
- *Energy Saving:* The innovative working principle and design allow for a smooth flow, minimizing pressure drop
- *Any installation position possible:* unlike other check valves, an Ygros Valve can be installed in horizontal and vertical up and down positions
- *Laminar flow:* no turbulences. This is particularly suitable for carbonated drinks or beer
- *Maintenance free*



TECHNICAL DATA

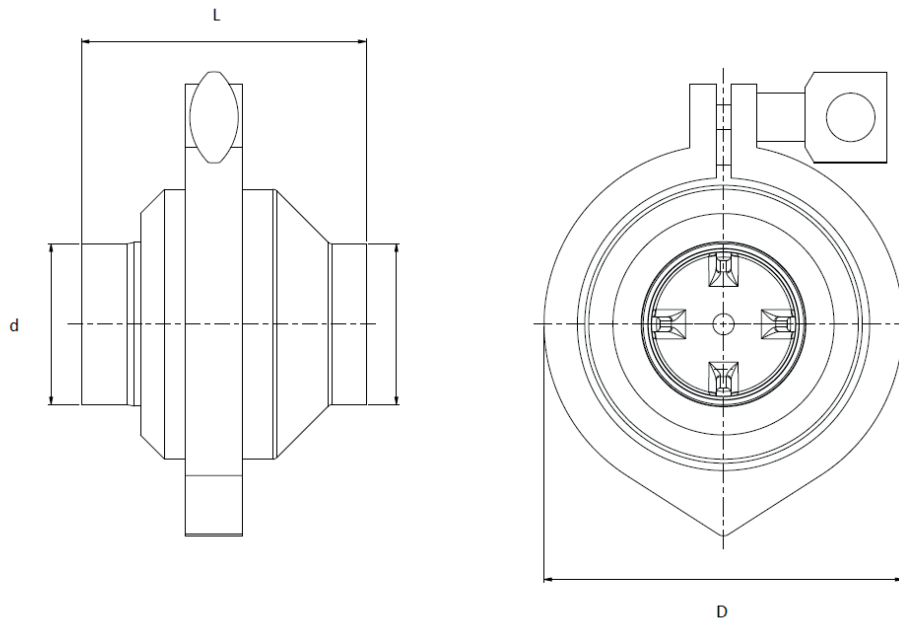
Product contact materials	Body and flanges: Stainless steel 1.4404 (AISI 316L) Shutter: 1.4462 (Duplex)
Seal material options	EPDM, VMQ (Silicone), FKM (Viton)
Surface finishes	• Internal: Ra ≤ 0.8 • External: Ra ≤ 3.2
End connection options	WELDING DIN 11850 (DIN 11866 Reihe A) WELDING ASME BPE (DIN 11866 Reihe C) TRI-CLAMP ASME BPE
Sizes	From DN15 to DN100 / From ¾" to 4"
Temperature range	-40°C / +150°C
Operating pressure	PN16
Media	Food and beverage, liquid
Certifications (on request)	3.1 / FDA / Surface roughness / EC 1935/2004 / 3-A





YEV TECHNICAL DATA

WELDING ENDS



DIN 11850 (DIN 11866 Reihe A) > R

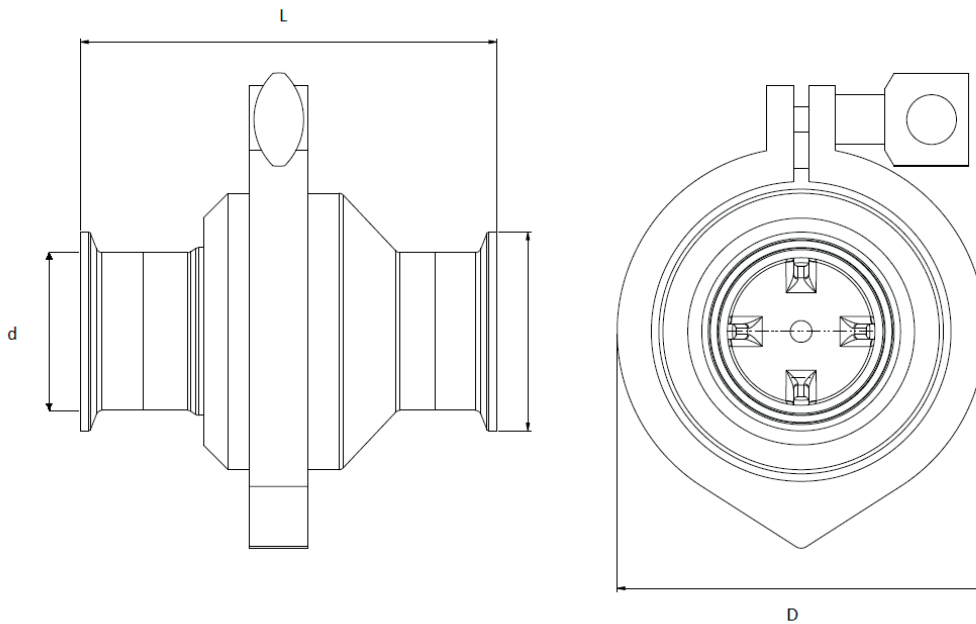
Dimensions	L (mm)	D (mm)	d (mm)	Sp (mm)	Weight (kg)
DN15	54	62,37	19	1,5	0,4
DN25	59,5	70	29	1,5	0,5
DN40	76	98	41	1,5	0,9
DN50	94	118,5	53	1,5	1,5
DN65	114,5	145	70	2	2,8
DN80	139,5	166	85	2,5	4,2
DN100	150,5	177,4	105	2,5	6

ASME BPE (DIN 11866 Reihe C) > T

Dimensions	L (mm)	D (mm)	d (mm)	Sp (mm)	Weight (kg)
¾"	54	62,37	19,05	1,67	0,4
1"	62,5	70	25,4	1,65	0,5
1-1/2"	76	98	38,1	1,65	0,9
2"	94	118,5	50,8	1,65	1,5
2-1/2"	114,5	145	63,5	1,65	2,8
3"	139,5	166	76,2	1,65	4,2
4"	150,5	177,4	101,6	2,11	6

YEV TECHNICAL DATA

TRI-CLAMP ENDS



ASME BPE > C

Dimensions	L (mm)	D (mm)	d (mm)	Weight (kg)
¾"	82	62,37	15,7	0,4
1"	87,9	70	22,1	0,5
1-1/2"	101,4	98	34,8	0,9
2"	119,4	118,5	47,5	1,5
2-1/2"	139,9	145	60,2	2,8
3"	164,9	166	72,9	4,2
4"	182,1	177,4	97,4	6