

DIMENSIONS TABLE

Nominal Size	FLANGED END								SOCKET END				THREADED END				SPIGOT END											
	DIN PN10				L				PVC, C-PVC		PP, PVDF		L		PVC		PP, PVDF											
	D	C	n	h	PVC C-PVC	PP PVDF	t		d1	l	L	d1	d1'	l	L	d2	l	PVC C-PVC	PP PVDF	d3	d3'	l	d3	l	t1	PP	PVDF	L
10mm 3/8"	90	60	4	14	120	119	12		16	14	99	15.5	15.4	13	96	Rp 3/8	15	99	98	16	13	16	-	-	-	-	-	114
15 1/2"	95	65	4	14	130	130	12		20	16	102	19.5	19.3	14.5	99	Rp 1/2	15	102	100	20	15	18.5	20	18.5	2.5	1.9	124	
20 3/4"	105	75	4	14	150	150	14		25	19	119	24.5	24.3	16	113	Rp 3/4	17	120	119	25	20	24	25	22	2.7	1.9	144	
25 1"	115	85	4	14	160	160	14		32	22	131	31.5	31.3	18	123	Rp 1	20	131	130	32	25	24.5	32	22.5	3.0	2.4	154	
32 1 1/4"	140	100	4	18	180	180	16		40	26	150	39.45	39.2	20.5	139	Rp 1 1/4	22	150	146	40	31	28	40	26	3.7	2.4	174	
40 1 1/2"	150	110	4	18	200	200	16		50	31	164	49.45	49.2	23.5	149	Rp 1 1/2	25	163	160	50	40	34	50	32	4.6	3.0	194	
50 2"	165	125	4	18	230	230	16		63	38	197	62.5	62.1	27.5	176	Rp 2	28	197	194	63	51	38	63	36	5.8	3.0	224	

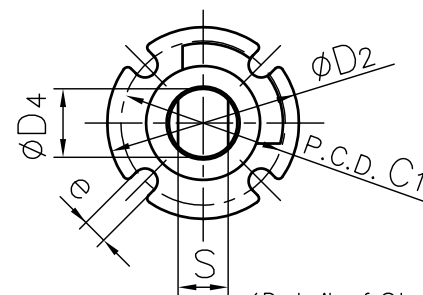
Unit : mm

Nominal Size	d	D1	D2	D3	D4	C1	H	H1	H2	H3	H4	H5	A	S	S1	S2	S3	e
10mm 3/8"	13	46	-	-	-	-	43.5	-	-	-	-	-	80	-	-	-	-	-
15 1/2"	15	48	42	25	13.5	36	51.5	29	30	6	3	8	92	10.5	19	7.3	11	5.5
20 3/4"	20	60	42	25	15	36	59.5	35	36.5	6	3	10	100	11	19	7.3	11	5.5
25 1"	25	70	42	25	15	36	68	39	43.5	6	3	10	110	11	19	7.3	11	5.5
32 1 1/4"	32	82	48	30	19	42	80.5	47	52.5	8	3	10	121	15	30	9	15	5.5
40 1 1/2"	40	100	57	35	23	50	89	55	61	10	3	12	131	18	30	9	15	6.5
50 2"	51	126	57	35	23	50	102.5	66	72.5	10	3	12	159	18	30	9	15	6.5

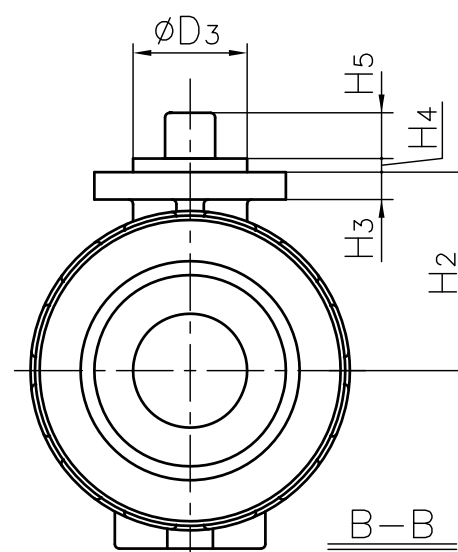
NOTE. The shape and appearance of assembly differ a little with nominal size and material compared to this drawing.

MODEL CLASSIFICATION TABLE

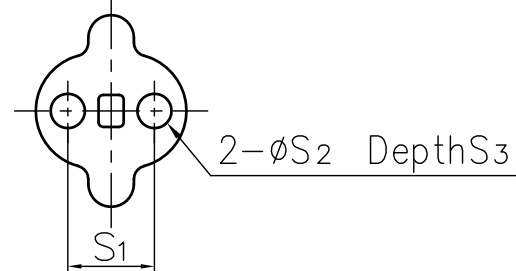
TYPE	MATERIAL	SIZE
21ALPHA	PVC C-PVC	15-50mm
21	PVC	10mm
	PP PVDF	10-50mm



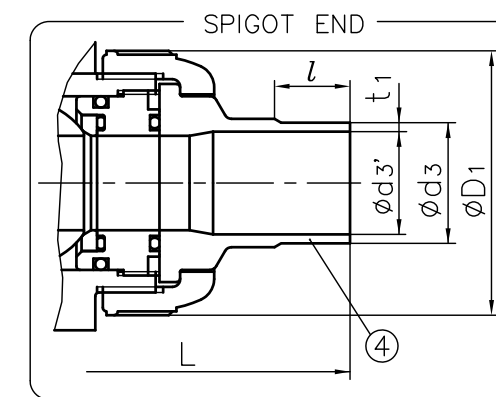
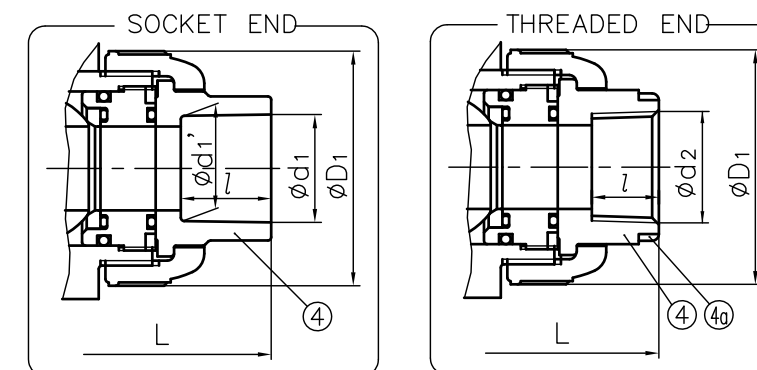
(Detail of Stem Part.)



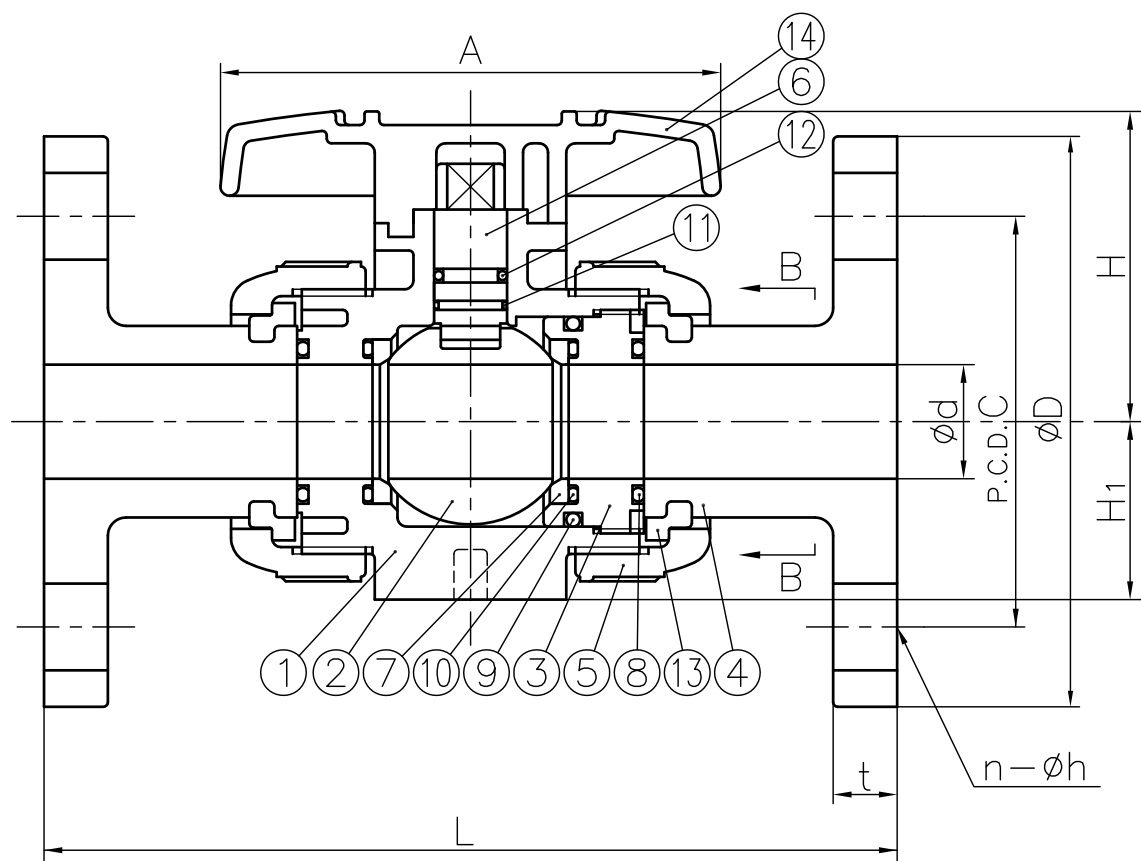
B-B



(Detail of Holes for Metallic Insert.)



FLANGED END



No.	DESCRIPTION	QTY.	MATERIAL	REMARKS
4a	RING	2	STAINLESS STEEL (SUS304)	Used for C-PVC Body, Threaded End: 15-25mm
14	HANDLE	1	ABS	
13	STOP RING	2	PVDF	Used for Flanged End
12	O-RING (E)	1	□EPDM □FKM □Others	
11	O-RING (D)	1		
10	O-RING (C)	2		
9	O-RING (B)	1		
8	O-RING (A)	2		
7	SEAT	2	PTFE	
6	STEM	1		
5	UNION NUT	2	□PVC □C-PVC □PP □PVDF	
4	END CONNECTOR	2		
3	CARRIER	1		
2	BALL	1		
1	BODY	1		

ITEM	BALL VALVE (TYPE21·21ALPHA) ASS'Y DIN : □FLANGED END, □SOCKET END, □THREADED END, □SPIGOT END 15mm (1/2") ~ 50mm (2")		
DRAWN	M.Yamamoto	DATE	SCALE
CHECKED	H.Kawano	SEP.30.2009	~
APPROVED	Y.Ozaki	DRAWING No.	
SPECIAL ORDER No.	IB-M1001DE		△6
ASAHI YUKIZAI CORPORATION			