

Ball valve type 21 with electric actuator



Body material	PVC-U	PVC-C	PP	PVDF
Ball seat	PTFE			
Other seats	• EPDM	• FKM	• *)	• FKM-F
Working temperature	0 °C up to 50 °C ¹⁾	0 °C up to 90 °C ¹⁾	-20 °C up to 80 °C ¹⁾	-20 °C up to 100 °C ¹⁾
Nominal size	DN 15 up to DN 100			
Connection with pipe	<ul style="list-style-type: none"> • Cement socket or spigot • Flange connection acc. to DIN EN 1092-1 (replaces DIN 2501) - PN 10 (16) 		<ul style="list-style-type: none"> • Welding socket or spigot • Threaded socket 	
Length	DIN EN 558 - 1 series FTF 1 (DIN 3202 - series F 1)			
Actuator	DN 15 - DN 100 24 - 240 V / IP 67			
	2 potential-free limit switches, manual override, Visual position indicator, heater in switch compartment; 12 - 24 V respectively special voltage on request			

*) Special version: CSM, NBR, FKM-F, FEP / Parofluor on request

¹⁾ Working temperatures for sealing materials:

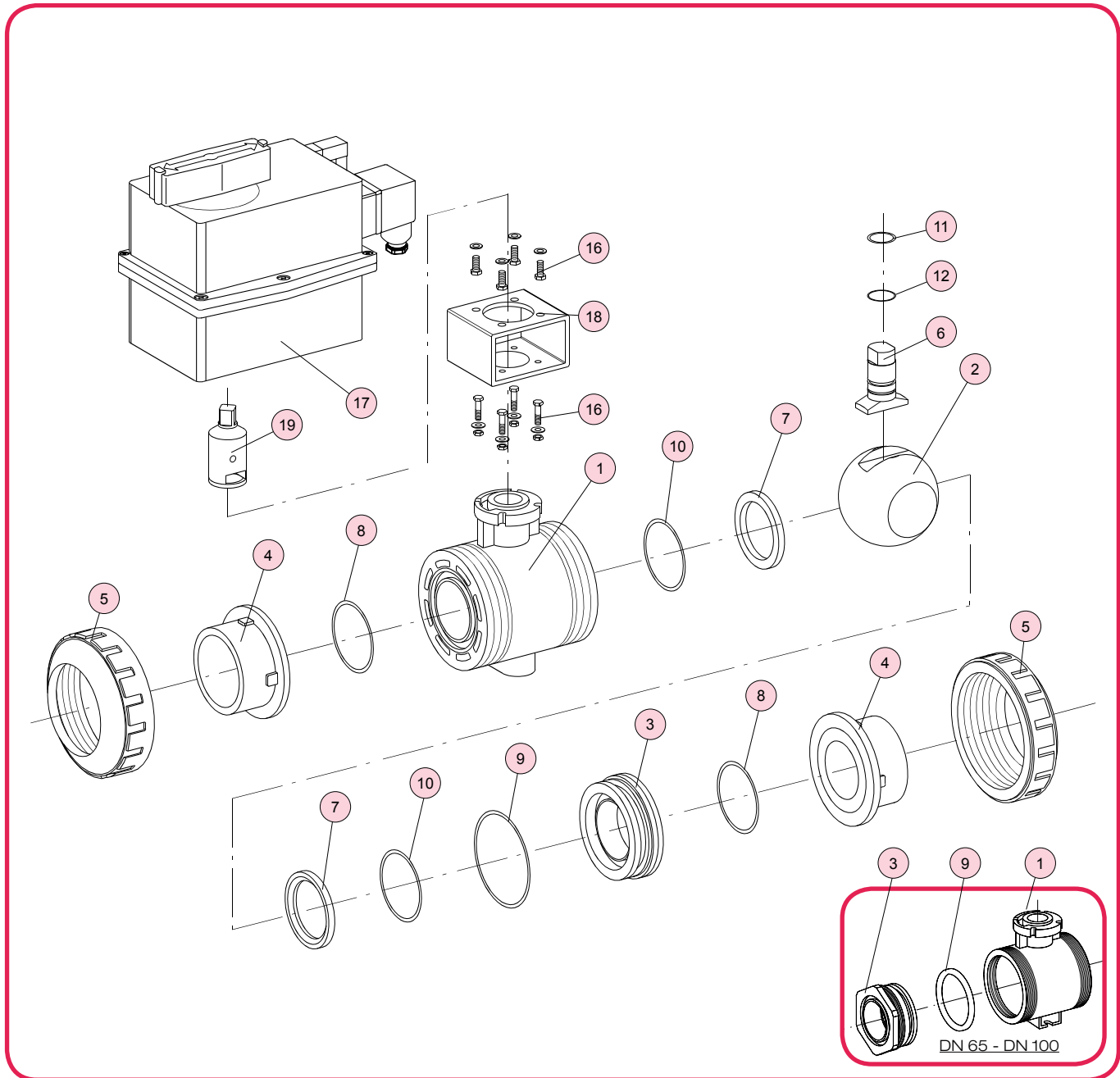
EPDM: -20 up to 90 °C
 NBR: -20 up to 100 °C
 FKM / FKM-F: -8 up to 100 °C

Example for an invitation to tender text:

Ball valve type 21, DN 65, PN 10, PVDF / FKM-F, flange connection acc. to DIN EN 1092-1 - PN 10, integrated mounting, with electric actuator type J4C-S35, 24 - 240 V, IP 67, manual override, 2 potential-free limit switches, heater in switch compartment

Document: FRANK_DB_L4_Kugelhahn Typ 21 elektr._05-2020_EN

Ball valve type 21 with electric actuator



No.	Description	Number	Material
1	Body	1	PVC-U, PVC-C, PP, PVDF
2	Ball ^{*)}	1	PVC-U, PVC-C, PP, PVDF
3	Carrier	1 ¹⁾	PVC-U, PVC-C, PP, PVDF
4	End connector (socket, spigot, flange)	2	PVC-U, PVC-C, PE, PP, PVDF
5	Union nut	2	PVC-U, PVC-C, PP-G, PVDF
6	Stem ^{*)}	1	PVC-U, PVC-C, PP, PVDF
7	Ball seat ^{*)}	2	PTFE
8	O-ring (A) ^{*)}	2	EPDM, FKM ²⁾

No.	Description	Number	Material
9	O-ring (B) ^{*)}	1 ¹⁾	EPDM, FKM ²⁾
10	O-ring (C) / gasket ^{*,3)}	2	EPDM, FKM ²⁾
11	O-ring (D) ^{*)}	1	EPDM, FKM ²⁾
12	O-ring (E) ^{*)}	1	EPDM, FKM ²⁾
16	Screw, washer / nut	8/4	A2 - 1.4301 (SUS 304)
17	Electric actuator	1	Polyamide
18	Bracket / ISO	1	A2 - 1.4301 (SUS 304)
19	Coupling	1	A2 - 1.4301 (SUS 304)

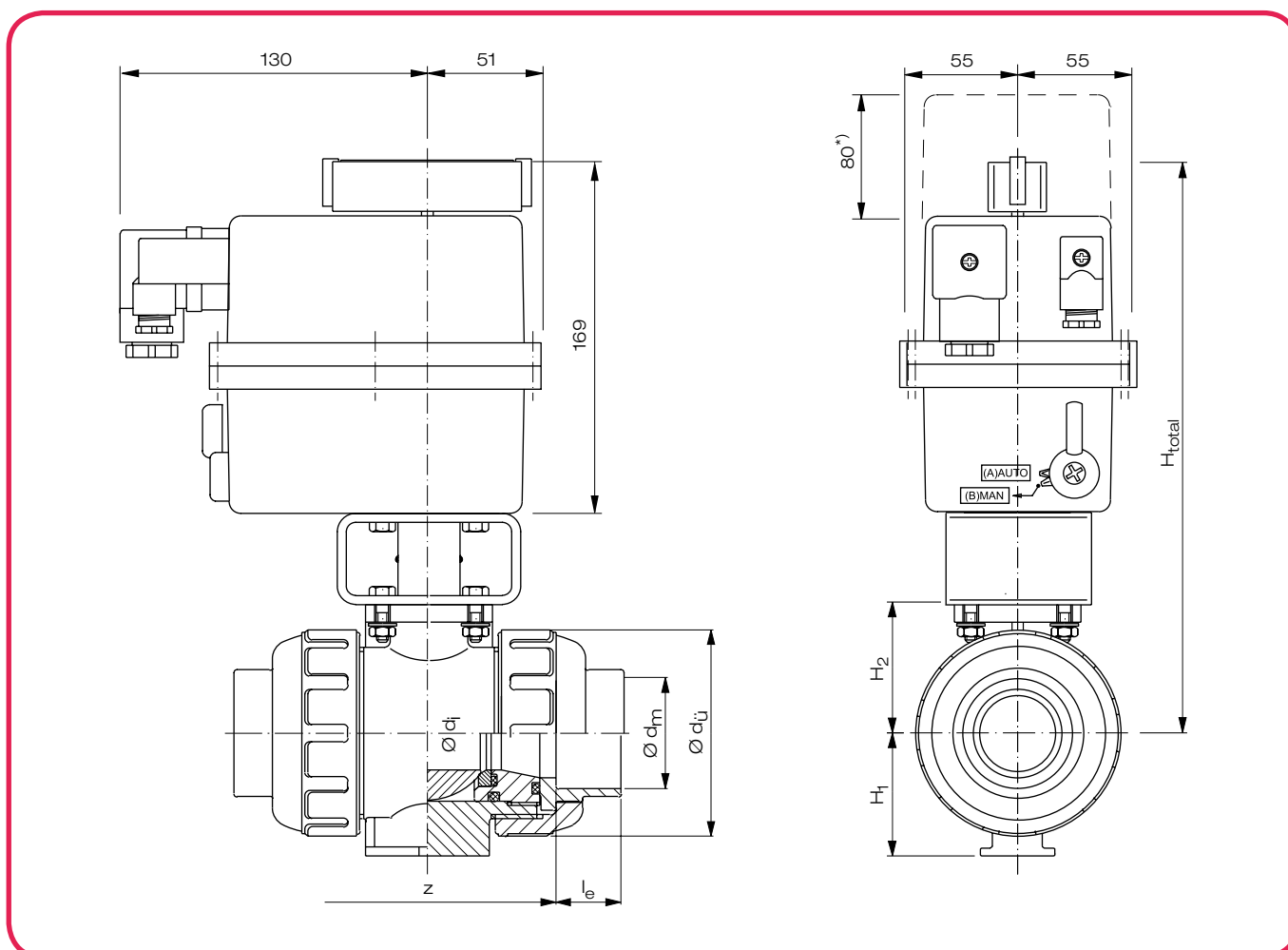
^{*)} Wearing parts

¹⁾ DN 65 up to DN 100: 2 pieces

²⁾ Special version: CSM, NBR, FKM-F, FEP / Parofluor on request

³⁾ Flat seat for DN 65 and above

Ball valve type 21 with electric actuator



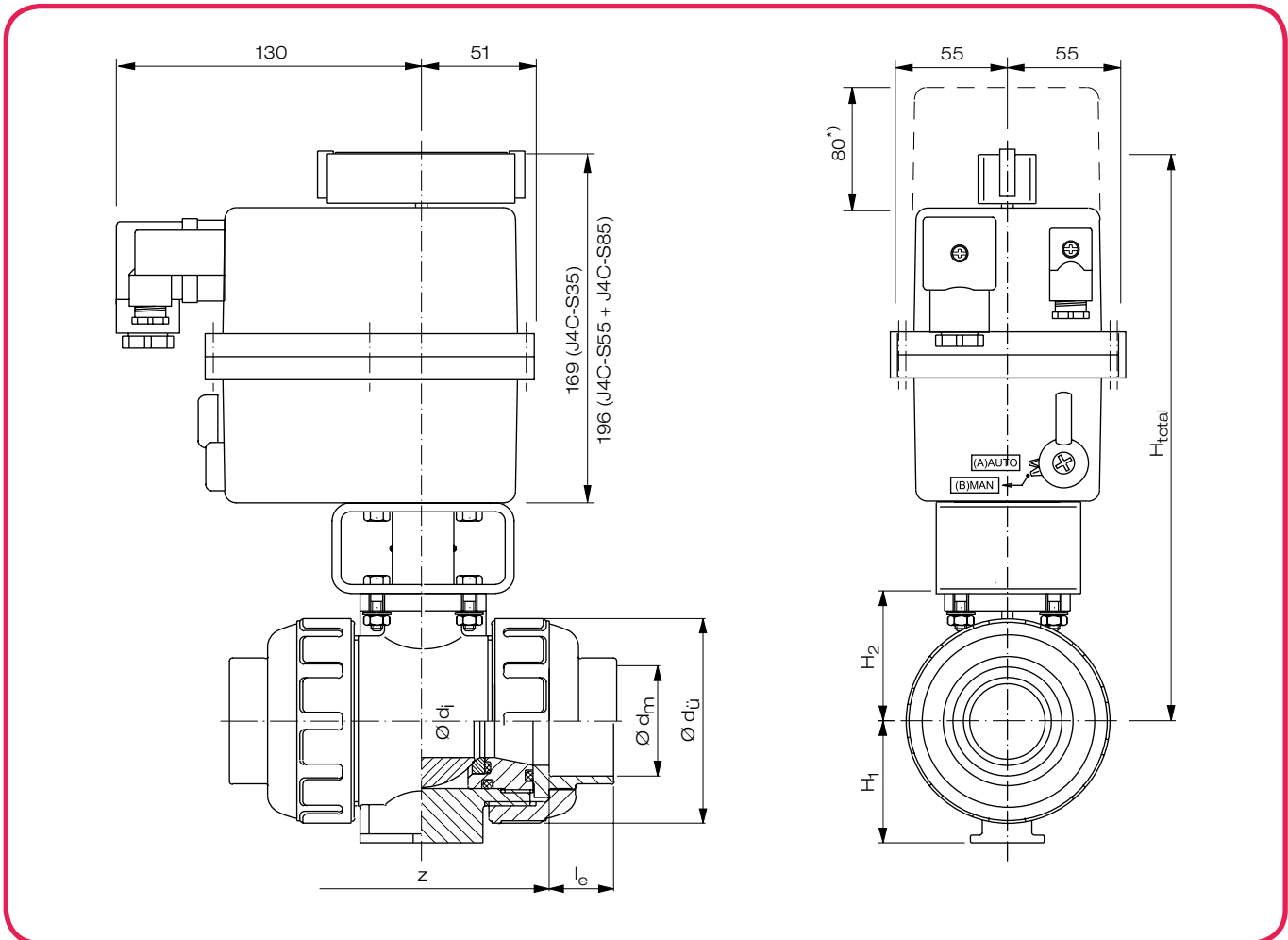
*) necessary space for disassembling the cap of the actuator

Dimensions in mm										Actuator			Weight in kg / pc.				
DN	d_i	d_u	Cement socket			Welding socket			H_1	H_2	H_{total}	Type	t_s [sec]	Cement socket		Welding socket	
			d_m	z	l_e	d_m	z	l_e						PVC-U	PVC-C	PP	PVDF
15	15	48	20	70	16	19,5	70	14,5	29	30	248	J4C S20 ^{*)}	9 ^{**)}	1,70	1,70	1,65	1,75
20	20	60	25	82	19	24,5	79	16	35	36,5	255	J4C S20 ^{*)}	9 ^{**)}	1,80	1,85	1,70	1,85
25	25	70	32	87	22	31,5	87	18,1	39	43,5	262	J4C S20 ^{*)}	9 ^{**)}	1,95	1,95	1,80	2,00
32	31	82	40	98	26	39,45	98	20,5	47	52,5	271	J4C S20 ^{*)}	9 ^{**)}	2,35	2,40	2,10	2,50
40	40	100	50	101	31	49,5	102	23,5	55	61	281	J4C S20 ^{*)}	9 ^{**)}	2,72	2,79	2,37	2,94
50	51	126	63	121	38	62,5	125	27,4	66	72,5	291	J4C S20 ^{*)}	9 ^{**)}	3,41	3,54	2,81	3,79

*) 24-240 V AC/DC **) +/- 10%

Other connections see L4-19
Actuation features and wiring diagram see L11-7-9

Ball valve type 21 with electric actuator



^{*)} necessary space for disassembling the cap of the actuator

Dimensions in mm											Actuator		Weight in kg / pc.				
DN	d_i	$d_{\dot{u}}$	Cement socket			Welding socket			H_1	H_2	H_{total}	Type	t_s [sec]	Cement socket		Welding socket	
			d_m	z	l_e	d_m	z	l_e						PVC-U	PVC-C	PP	PVDF
65	58	133	75	145	44	74,3	145	31	72	85	390	J4C-S35	9 ^{*)}	4,96	5,89	4,15	5,44
80	68,5	152	90	180	51	89,2	180	35,5	85	94	426	J4C-S55	13 ^{*)}	7,91	7,36	5,66	7,68
100	90	210	110	227	61	109,1	227	41,5	110	126	478	J4C-S85	29 ^{*)}	14,85	16,00	10,49	17,25

^{*)} +/- 10%

Other connections see L4-19

Actuation features and wiring diagram see L11-3-5